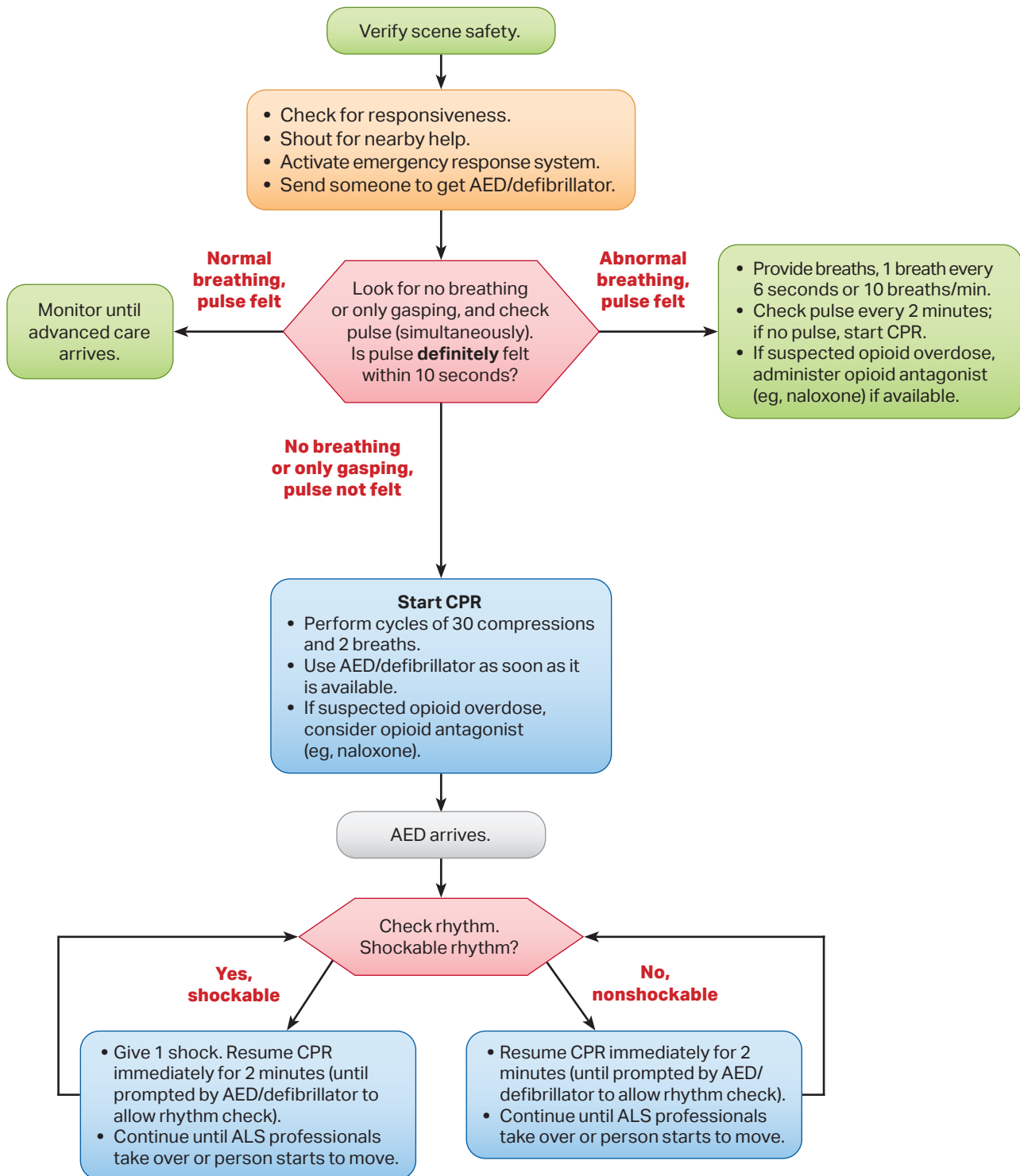


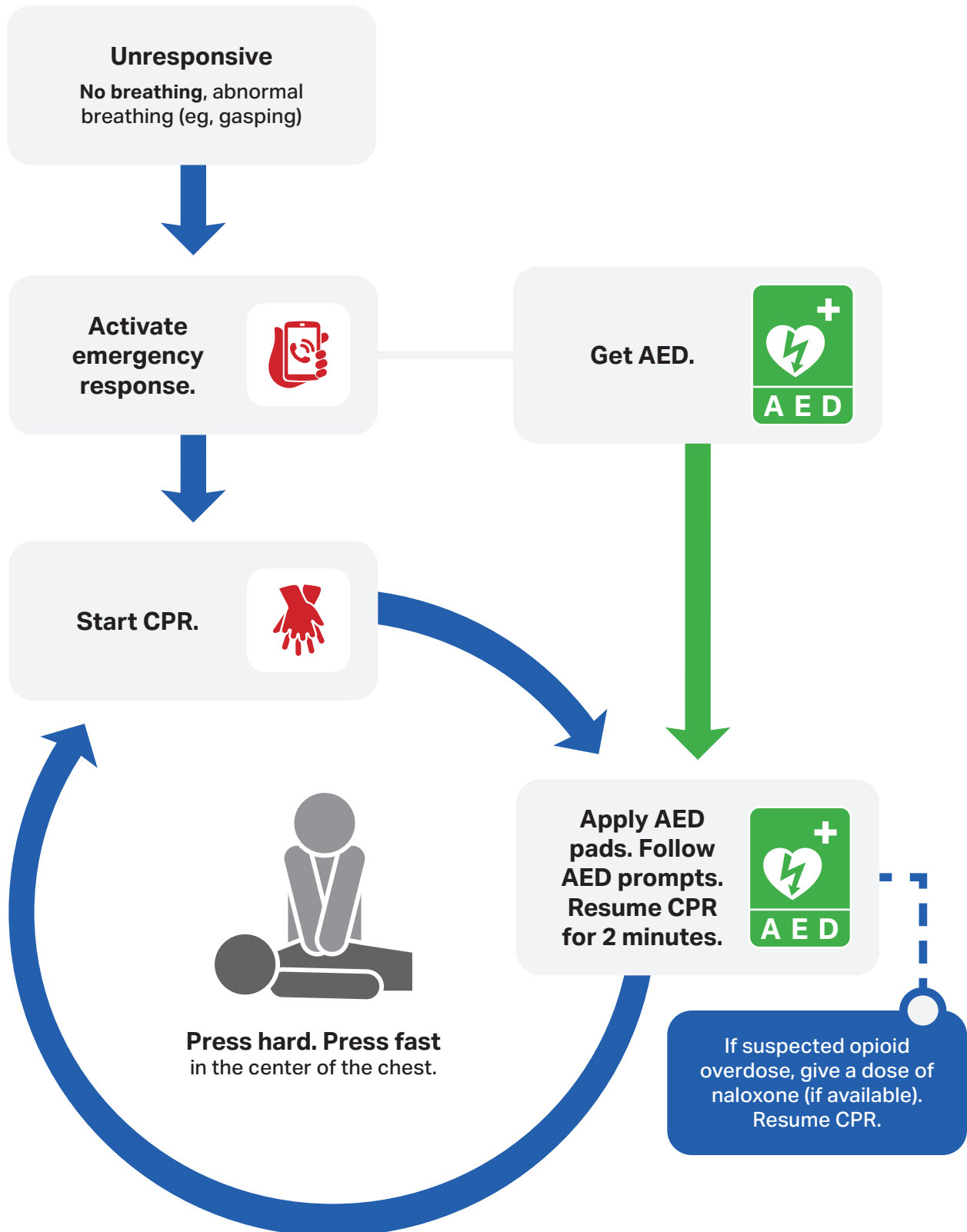
Adult* Basic Life Support Algorithm for Health Care Professionals



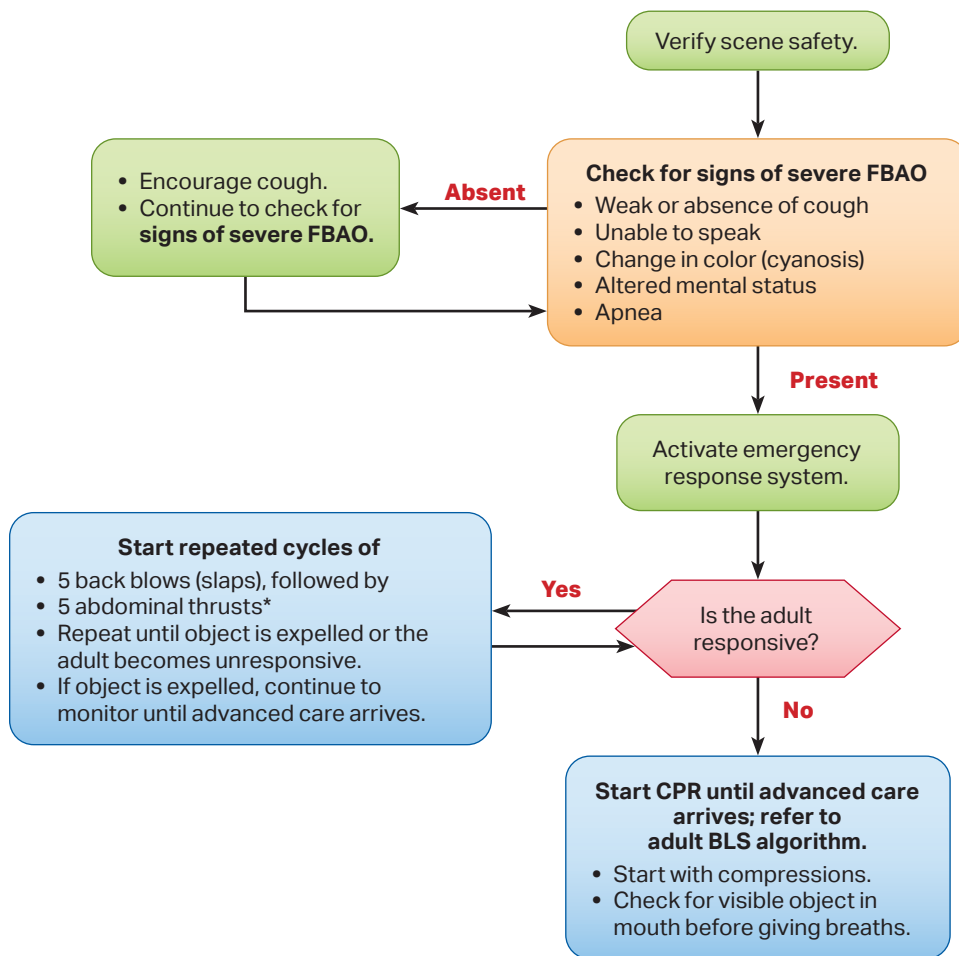
*If signs of puberty, treat as adult.

Act Now. Save a Life.

Follow these steps to take action.



Adult Foreign-Body Airway Obstruction



*For patients in the late stages of pregnancy, or when the rescuer is unable to encircle the patient's abdomen, 5 chest thrusts should be used instead.